



ZEUS

BY TEUPEN®



Zeus15GTplus

SPECIFICATIONS

PERFORMANCE

Working height, max.	15.40 m
Horizontal outreach with 200 kg	7.90 m
Up and Over Clearance, max.	5.40 m
Basket capacity	200 kg
Movable jib	90°
Turret rotation	355°
To be jacked up on ground slope of	12°/21.0 %
Height and width track adjustment	8/16 cm
Gradeability, max.	19.7°/35.5 %
Slope angle	16.7°/30.0 %
Travel speed	1.8 km/h

MEASUREMENTS

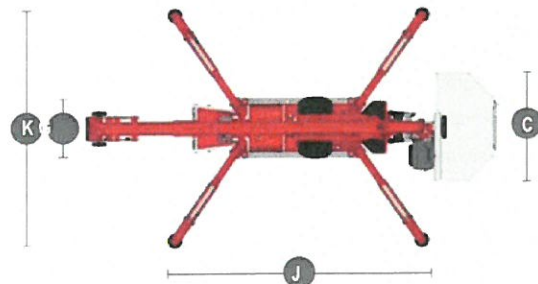
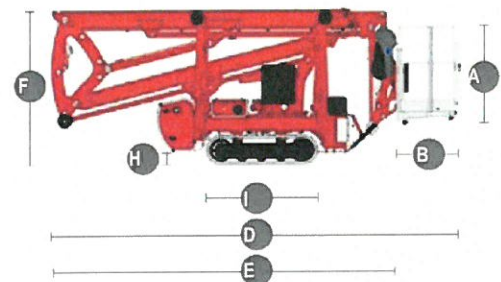
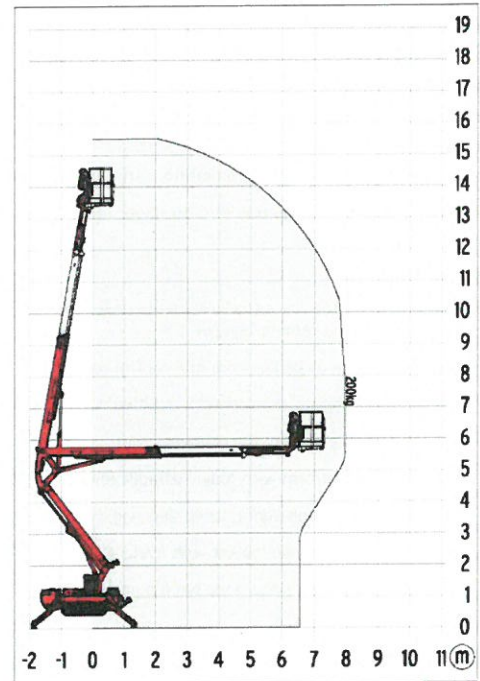
Platform height [A]	1.10 m
Platform length [B]	0.70 m
Platform width [C]	1.42 m
Length, overall [D]	5.20 m
Length without basket [E]	4.50 m
Height, travel position [F]	1.99 m
Width, minimal overall width [G]	0.78 m
Ground clearance, max. [H]	0.25 m
Track (L x W) [I]	145 x 20 cm
Length outrigger footprint, max. [J]	3.31 m
Width outrigger footprint, max. [K]	3.03 m
Outrigger plate Ø	0.18 m

WEIGHT

Total weight	2200 kg
Live load in travelling position	4.33 kN/m ²
Live load in working position	2.35 kN/m ²
Point load per outrigger plate, max.	15.70 kN

POWER

Standard power sources (electric and combustion engine)	1] Electric: 230 V, 12.9 A, 2.2 k 2] Diesel: Kubota Z 602 (10.8 kW/14.5 hp)
Optional power sources	1] Petrol: Vanguard OHV 16 HP (11.93 kW/16 hp) 2] Li-Ion Battery: 48 V
Fuel tank capacity petrol engine	12.0 l
Fuel tank capacity diesel engine	12.0 l



STANDARDS COMPLIANCE

AS1418-10 2011 Cranes Hoists and Winches –
Mobile Elevating Work Platforms

Zeus 15GTplus | FEATURES



CHASSIS

- Powerful track drive for precise maneuvering and terrainability
- White, non-marking rubber tracks with specially arranged profile providing optimum grip
- Mechanically height and width adjustable track chassis

STABILISATION

- Fully-hydraulic, automatic levelling system
- Constant outrigger setup monitoring with ground pressure sensing
- Wear resistant, anti-friction PVC outrigger feet

BOOM SYSTEM

- Removable cable remote control
- All functions are available from one control panel
- Electric-proportional controls with intuitive operator guidance
- Robust, lockable control panel cover
- Self-levelling platform with fully-hydraulic levelling system
- Boom rotation via high-performance slew ring, worm gear and hydraulic motor
- Detachable two-person basket with eyelets for safety harnesses
- Emergency lowering system via hand pump
- 355° turntable rotation
- Movable jib

POWER

- 230 V electric motor (EU)
- Vanguard OHP 16 HP petrol engine (11.93 kW/16 hp)
- Start-Stop switch of combustion engine in the basket

PRODUCTIVITY, SAFETY, QUALITY

- Sturdy base frame with full length forklift pockets
- 230 V (EU) power outlet in the basket
- High-quality paint in RAL 3020 (red)
- Drive operation without basket available
- Cables and hoses are safely routed through the boom structure
- Biodegradable hydraulic oil
- Lock valves - hydraulic return valves directly on all hydraulic cylinders
- Relief valves protecting the hydraulic system from too high pressures
- Protective covers for oil-tank, emergency controls and connecting cables and hoses
- Protective covers for electric housing and ground control panel
- Hour meter
- Fuzzy IV control technology

OPTIONS

- Kubota Z602 Diesel engine (10.8 kW/14.5 hp) instead of petrol engine
- Li-Ion battery drive 48 V instead of petrol engine
- Custom paintwork, one colour, according to RAL scheme (except metallic coatings, signal or special colors)
- Custom paintwork, two colours, according to RAL scheme (except metallic coatings, signal or special colors)
- Indoor non marking rubber track, with less tread depth the profile enables smooth travelling.

ACCESSORIES

- Safety harness
- Outrigger pad (450 x 400 x 40 mm)
- Lockable storage frame for outrigger pads
- 4 outrigger/sliding pads (700 x 220 x 60 mm)
- Track mat (2000 x 800 x 15 mm)
- 2 protective track covers, made of high-quality polypropylene fabric
- Lifting device (200 kg load capacity) This option can only be ordered in combination with the mounting for the lifting device.
- Mounting for lifting device
- 4 covers on piston rod (outrigger/stabiliser) cylinders
- 2 LED headlights 10-30 V on engine unit

TRAILERS

Bullant Tandem Trailer 2.9MT to suit Zeus by Teupen, Hot Dipped Galvanised with checker plate floor, electric drum brake axles with breakaway system, full width ramps, heavy duty swing up jockey wheel, wired Nava LED truck lighting and spare wheel. Trailer weight 560kg.

Named after the Roman god of the sky, the Zeus collection of spider lifts were titled for their impressive skyward reach.